

# OPERATING INSTRUCTIONS

## MINI-MANTRA

## MINI-MANTRA PLUS

## MICRO-MANTRA



**ULV- Applicator for weed control  
in areas of specialised cultivation such as nurseries, orchards and  
vineyards, ornamental plant and vegetable gardens, as well as  
agricultural, forestry, communal and non-cultivated lands.**

**The unit has been developed for the *undiluted*  
application of ROUNDUP® products (Glyphosate).**

### Important:

Before application, carefully read the usage instructions for the unit and the plant protective agent!  
Observe safety instructions!

For questions regarding plant protective agents, consult the manufacturer!

Observe the requirements and regional regulations for the use of herbicides and, if necessary, obtain approval from the responsible authorities (e.g. environmental conservation agency)!

Application is to be performed only by a competent user.

### Remarks about usage of the unit:

**Settings:** This system is not suitable for the application of water.

Use herbicides for testing the spray action and calibration of the flow rate.

**Usage:** Position the spray hood directly above the ground –  
if the spray hood is held too high, the danger of spray driftage exists.

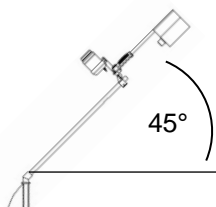
**Cleaning:** Do not clean the unit with a high-pressure spray or an intense water jet spray.

**Storage:** Store the unit at an angle of between ca. 45° (= work position) and 0° (= horizontal) to the floor (see picture).

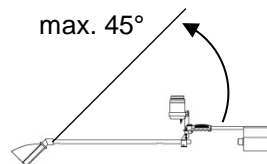


**Keep the applicator and pesticides out of the reach of children.**

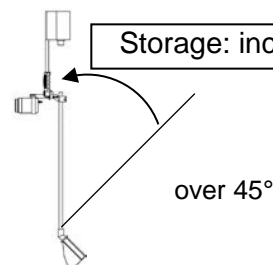
Work position



Storage: correct



Storage: incorrect



**Noise emission from the unit equates to less than 70 dB(A).**

Manufacturer:

**Mantis ULV-Sprühgeräte GmbH**

Germany 21502 Geesthacht, Vierlander Str. 11 a

Telephone +49(0)4152-8459-0, FAX +49(0)4152-8459-11

Web: [www.mantis-ulv.eu](http://www.mantis-ulv.eu) Email: [mantis@mantis-ulv.eu](mailto:mantis@mantis-ulv.eu)

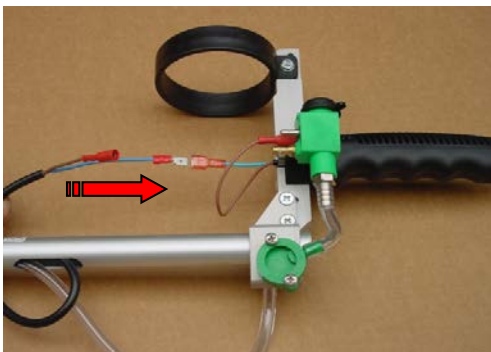
# ASSEMBLY



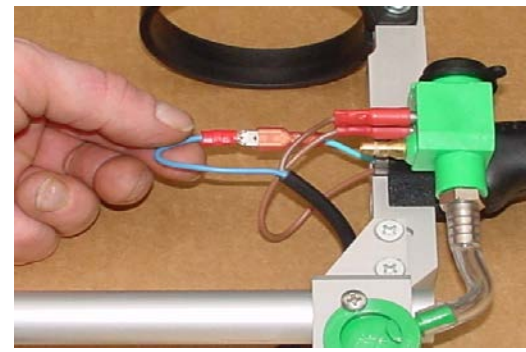
1. Connect the spray hood to the spray hood holder



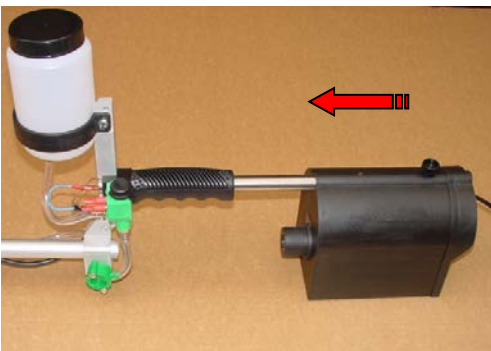
2. Screw the flow rate control to the spray hood and spray hood holder



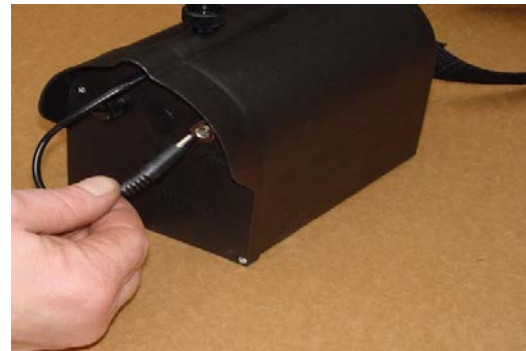
3. Mount the tank bracket to the spray hood holder and secure with knurled-head screw



4. Connect electrical wires  
(Blue with the blue blade-terminal)  
(Brown with the switch/valve unit round pin-plug)



5. Slide the powerpack onto the powerpack holder and secure with a knurled-head screw



6. Plug the phone jack into the socket  
**Attention: CHARGE BATTERY BEFORE USING!**



7. Connect the carrying belt to the tank and powerpack holder



# MINI-MANTRA + MINI-MANTRA PLUS + MICRO-MANTRA

## For the undiluted application of Roundup® products (Glyphosate)

### Intended usage:

Weed control in areas of specialised cultivation such as nurseries, orchards and vineyards, ornamental plant and vegetable gardens, as well as agricultural, forestry, communal and non-cultivated lands.

Before application, carefully read the usage instructions for the applicator and pesticides.

Observe safety instructions.

For questions regarding pesticides, consult the manufacturer!

Observe the requirements and regional regulations for the use of herbicides. Application is to be performed only by a competent user.

Noise emission from the unit equates to less than 70 dB (A).

### Protective measures

Observe remarks in the usage instructions for the pesticide regarding the safety of the user; wear recommended body protection. Wear protective gloves when filling the chemical.

Do not eat, smoke or drink while working with pesticides.

Avoid chemical spillage without fail. After completion of the work, thoroughly clean hands and face.

Thoroughly clean and dry the unit immediately following its usage. Never use the mouth to blow out nozzles or other small parts!



Keep pesticides and applicators away from children.

### Assembly and preparation for the first application

Assembly of this unit is described on page 2.

Before the first application of the unit, allow the battery to charge for at least 16 hours. First plug the applicator plug into the loading socket, then plug the charging device into the 230 V power outlet. After ca. 16 hours charging time, the battery has reached its full voltage capacity. When the charging process is complete, first unplug the charging device from the 230 V power outlet, then unplug the unit plug from the charger socket.

The spray width should be subsequently checked - ideally with a piece of cardboard laid out on the ground - and the flow rate adjusted (see below for specifics).

### General remarks about the function and regarding the application of the unit

**Pesticides:** This applicator was originally designed for the undiluted application of Roundup products (Glyphosate). Practical experience has shown, however, that other herbicides can also be deployed in conjunction with this technology. Considering the many products on the market with their differing formulations, it is not possible to provide a complete list with application rate recommendations. The specifications depicted below for adjusting the applicator relate to the usage of Roundup UltraMax (Glyphosate 450 gr/ltr). In general, all products with a comparable viscosity are suitable. If you intend to use a product other than Roundup UltraMax, its application should be initially tested on a trial basis over a small area. In any case, the usage instructions for the chosen herbicide should be observed along with the local requirements.

**Applicator function:** The rotating atomiser is driven by means of a rechargeable battery. Metering takes place by means of a metering valve. Droplets are formed by the centrifugal force of the rotating atomiser. The droplets are discharged downwards by the rotating atomiser through a step-free, adjustable segment. The residual chemical in the tank, not able to be applied, is approximately 10 ml. This residual fluid can be refilled back into the original herbicide container.

**Checking applicator function:** Chemicals can flow at differing rates, more quickly or slowly, due to temperature variations. For this reason, the flow rate depicted in the metering table must be checked and corrected as necessary. This technology is not suitable for the application of water. Always use herbicides for testing the spray process and for calibrating the flow rate. Check the rotating atomiser for cleanliness and free turning movement on a daily basis. Check the application volume from time to time throughout the season.

**Deployment of the applicator:** Position the spray hood directly above the ground - if the spray hood is held too high, the danger of spray driftage exists. During operation, chemical fluid will collect in the atomiser reservoir and can continue to drip for few seconds after pressing the switch- valve unit.

**Attention!** Before lifting or tilting the spray hood, it is essential that the stop valve is closed and the atomiser motor is switched off.

## Setting and verification

### Flow rate

- Place an underlay (e.g. cardboard or paper) on the ground.
- Pull out the phone jack from the powerpack (A).
- Fill the chemical tank with herbicide (undiluted).
- Set down the applicator as pictured below.
- Remove the hose from below the flow rate controller. (B)
- Place the measuring cylinder beneath the flow rate controller (see drawing on page 5).
- First set metering valve to maximum. (D)
- Actuate switch/valve unit (C) and select continuous operation by pressing and turning the button switch in a clockwise direction.
- When the herbicide reaches the metering valve (identifiable in the flow rate controller), the desired setting (see table) is adjusted on the valve. (D)
- Collect the herbicide for 60 sec. in the measuring cylinder.
- If desired quantity is not reached, readjust metering valve and calibrate again.
- Afterwards reattach stereo jack and hose.

**Example for the MINI-MANTRA:** The setting B is an approximation for Roundup UltraMax; 4 ml/min. or 100 drops/min. in the flow rate controller. Deviation from the desired volume can be regulated at the metering valve by setting a greater or lesser flow rate.

### Spray width

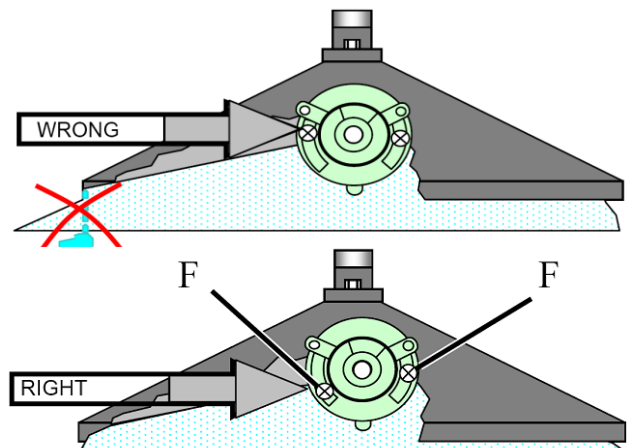
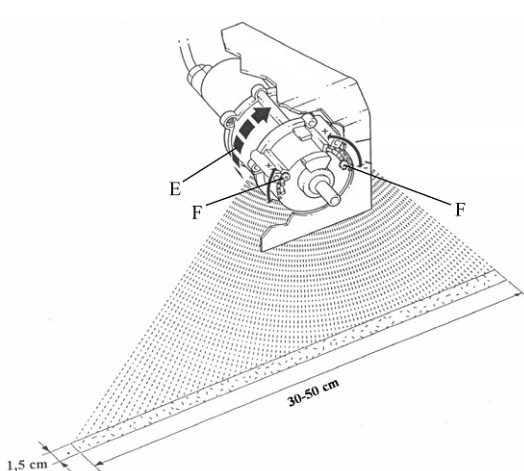
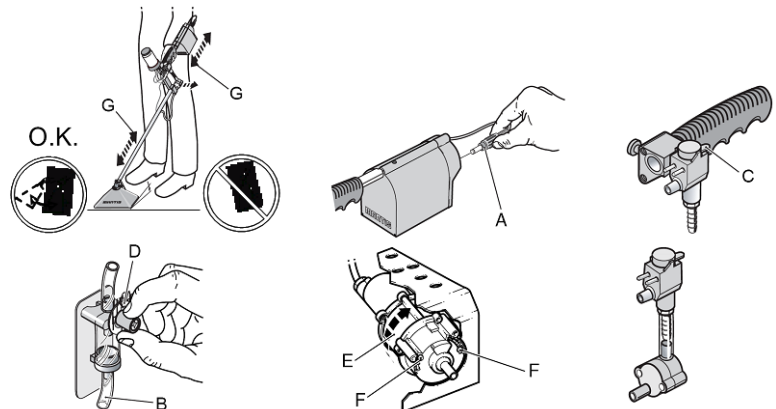
- Hold the applicator in its working position above the overlay (e.g. cardboard or paper). Actuate the button switch and initially direct the spray hood at the underlay, appraising the spray width at various heights above the section being sprayed. The spray width must be set in such a manner that the droplets are discharged over the entire spray hood width. The optimal spray width is set by the manufacturer under standard operating conditions.
- It is possible to compensate for deviations by loosening the screw (F) and sliding the width adjustment on the atomiser (see drawing) to adjust either side so that the spray jet just misses the edge of the hood.

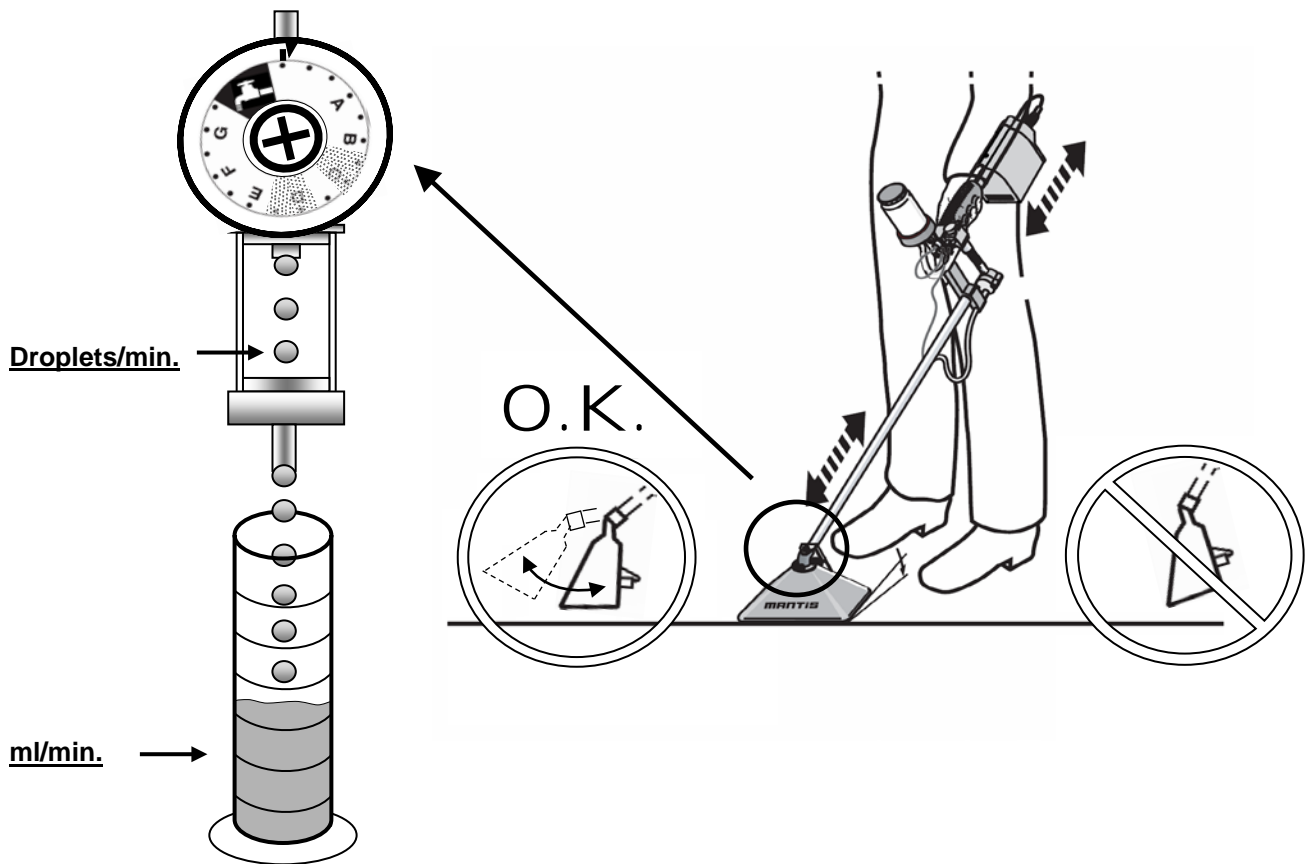
### Working width

- The whole spray hood of MINI-MANTRA and MINI-MANTRA Plus can be turned after loosening the two nuts (spray hood adjustment) and by that working width can be adjusted continuously from 30 to 10 cm (MINI-MANTRA) respectively from 45 to 15 cm (MINI-MANTRA Plus). The nuts must be re-tightened afterwards without fail!  
The spray hood of MICRO-MANTRA has a fixed working width of 20 cm.

**When the desired volume is obtained, the spray width verified and the working width adjusted, the application process can begin.**

- E. Correct rotation direction for disc
- F. Spray width adjustment
- G. Adjust length





<b>MINI MANTRA Plus</b>				
at a walking speed of 4 km/h and 20 °C				
applied quantity desired	Pre-position of metering knob		Droplets per minute	ml per minute
	Roudup UltraMax	Basta *		
1l / ha	A-B	B	75	3,0
2l / ha	B-C	C	150	6,0
3l / ha	E	E	225	9,0

<b>MINI MANTRA</b>				
at a walking speed of 4 km/h and 20 °C				
applied quantity desired	Pre-position of metering knob		Droplets per minute	ml per minute
	Roudup UltraMax	Basta *		
1l / ha	A	A-B	50	2,0
2l / ha	B	B-C	100	4,0
3l / ha	B-C	C	150	6,0

<b>MICRO MANTRA</b>				
at a walking speed of 4 km/h and 20 °C				
applied quantity desired	Pre-position of metering knob		Droplets per minute	ml per minute
	Roudup UltraMax	Basta *		
1l / ha	A	A-B	33	1,3
2l / ha	A-B	B	67	2,7
3l / ha	B	B-C	100	4,0

\* Basta (Glufosinate-ammonium 200g/l)

## Cleaning

**Do not clean the applicator with a high-pressure spray or with an intense water jet spray.**

**Cleaning during the season:** During short breaks in the work day (a few hours), the herbicide can remain in the system as long as the metering valve is closed. After completion of work task: before cleaning, return the chemical into its original container. Set the metering valve to maximum (water cock symbol). Fill the chemical tank half way with water, actuate the button switch and allow the atomiser to run for 3 minutes over a collector tank or spread the cleaning fluid over the previously worked surface. Remove the remaining water from the tank.



**Cleaning after the season:** Rinse the unit with warm water as described above. Additionally: open filter and clean screen if necessary. The spray hood and the atomiser housing can be cleaned with a moist cloth, except the atomiser disc in order to avoid damage. For heavy contamination, the atomiser housing should be unscrewed to remove contaminants and plant parts. Connect the unit to the battery charger (see below).

### Charging the applicator and care of the accumulator


The applicator is fitted with an automatic charging device. Trickle charging is possible.

In order to charge a completely empty battery back up to full capacity, ca. 16 hours charging time is required. When a battery is empty, it should be immediately recharged. Never leave a battery discharged for long periods.

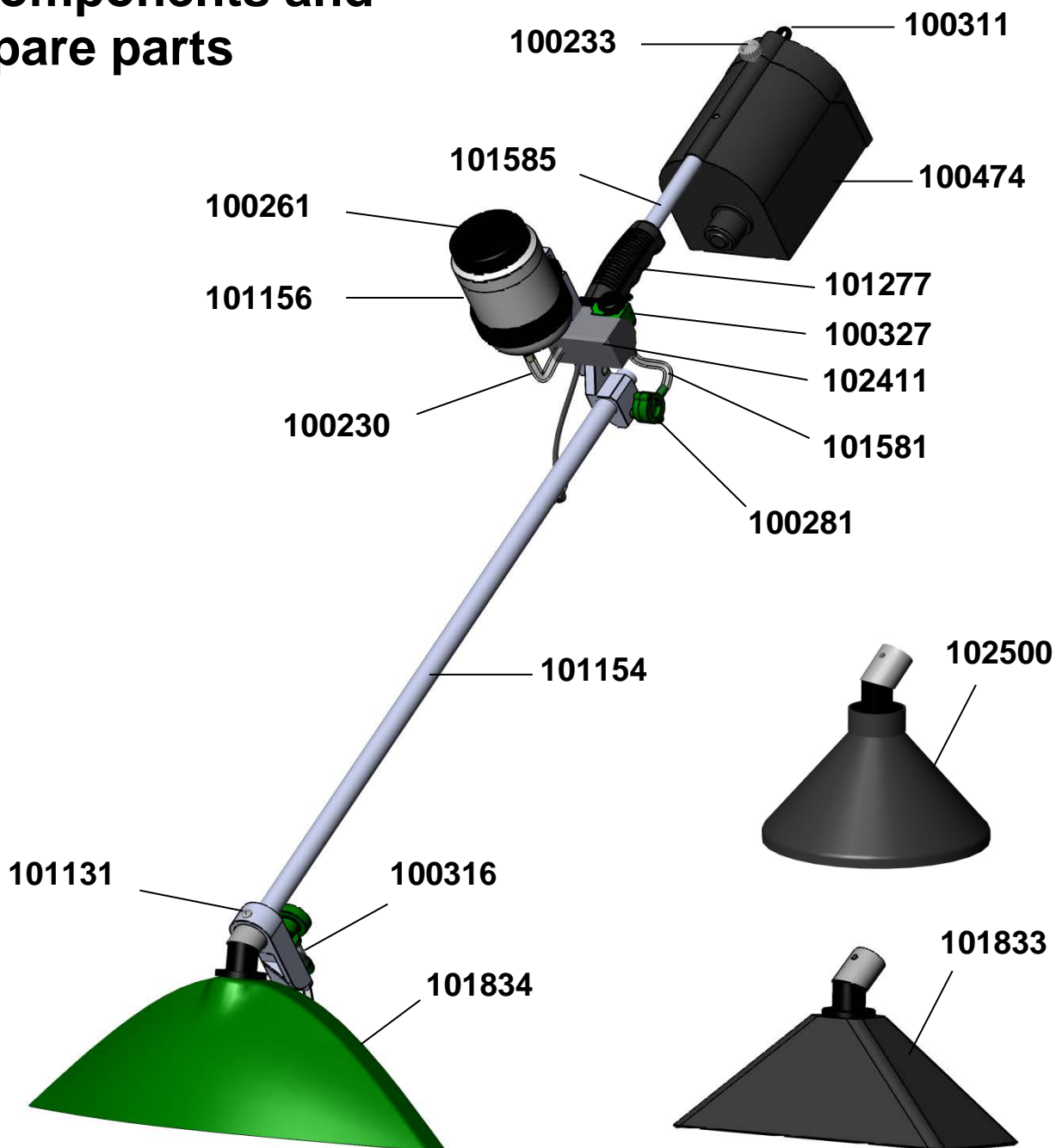
Battery charging	Minimum charging time	Time interval
Fully discharged	16 hrs.	immediately
Short-term usage	6 hrs.	immediately
Storage without usage	( 2 hrs. 1 x per month)	<b>or permanent charge</b>

The applicator can be used for ca. 16 hours with a fully charged battery.

## Fault remedy

Fault	Cause	Remedy
<b>Atomiser disc not turning</b>	Atomiser contaminated Battery empty Fuse blown  No electrical contact Battery defective Atomiser motor defective	Thoroughly clean atomiser, remove plant parts if needed Charge battery Replace fuse on powerpack (Replacement fuses are located in the powerpack housing) Check cable or connector contact Install new battery Install new motor Connect the brown cable to Plus (+).
<b>Atomiser spray one-sided</b>	Rotation disc turning in the wrong direction	Connect cable correctly! Selectively plug the brown cable onto the contact pin on the switch/valve unit Connect the blue cable via the round pin plug. Check to ensure the battery connection to the powerpack is correctly poled, blue cable to Plus (+).
<b>Atomiser spray too wide</b>	Width adjustment improperly set	Loosen the screw (F, see page 4) and correct the width setting to the left or to the right, respectively
<b>Atomiser drips</b>	Metering valve incorrectly set Atomiser disc defective / contaminated Atomiser spray discharge contaminated	Check setting, see table Replace / clean disc Clean
<b>Atomiser foams</b>	Residual water in system	Completely empty container, hose, segmental atomiser.
<b>Chemical not flowing evenly</b>	Filter contaminated Metering valve clogged	Unscrew filter, clean screen. Set scale to maximum  . Take off hose of upper side of metering valve and blow through with compressed air or use cleaning syringe (accessory art.-no. 100348).
<b>Air in hose line</b>	Hose connection / Filter leaking	Slightly shorten the hose and push onto a hose nipple. Re-tighten the screw on the filter.

# Components and spare parts



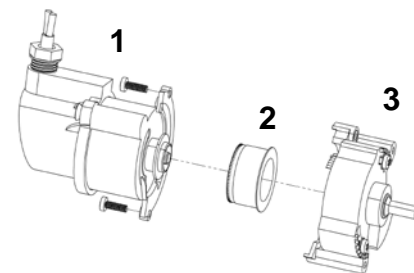
Part No.	Description
100311	Cable with phone jack, 670mm, MINI-MANTRA / Plus
100474	Powerpack with 1 battery 6 V - 7 Ah
101277	Bottle bracket, handhold, MINI MANTRA, assembly
100327	Switch/valve unit (complete) gold-plated electrodes, hose nipple incorporated
102411	Cover, for bottle holder MINI-MANTRA
101581	PVC tube 4 x 2 mm, 7 cm
100281	Filter MINI-MANTRA
101154	Spray hood beam, MINI-MANTRA complete
100316	Dosing valve with flow rate controller and bracket for MINI-MANTRA / Plus
101834	Spray hood 45 cm width without atomiser
101131	Pan cross head screw M 5 x 14 mm
100230	Hose PVC, 5 x 2 mm, 13.5 cm for switch/valve unit
101156	Bottle 500 ml with hose connector and scale
100261	Bottle lid
101585	Powerpack bracket, cable, screw, MINI-MANTRA
100233	Knurled-head screw M 5 x 10 mm
102500	Spray hood 20 cm for MICRO-MANTRA compl. without atomiser
101833	Spray hood 30 cm width without atomiser

# Components and spare parts for MINI-MANTRA, MINI-MANTRA PLUS, MICRO-MANTRA

**Part No. Description**

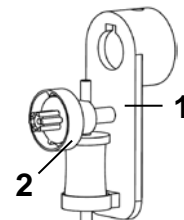
**101972 Atomiser 08, Mini Mantra / Plus**

101995	Motor-module for atomiser
100478	Atomiser disc for herbicide atomiser
101996	Segment-module for atomiser incl. width adjustment

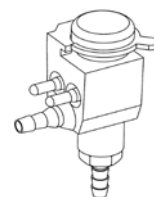


**100316 Dosing valve with flow rate controller and bracket for MINI-MANTRA / Plus**

101654	Dosing valve with flow rate controller for MINI-MANTRA + MANTRA
100287	Dosing valve bracket

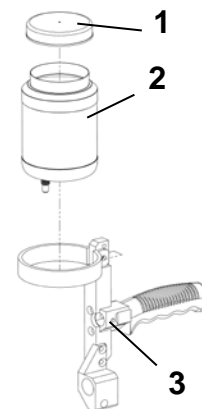


**100327 Switch/valve unit (complete) gold-plated electrodes, hose nipple incorporated**



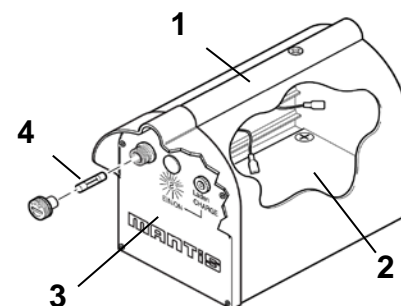
**100268 Bottle holder kit MINI, holder ALU**

100261	Bottle lid
101156	Bottle 500 ml with hose connector and scale
101277	Bottle bracket, handhold, MINI MANTRA, assembly



**100474 Powerpack with 1 battery 6 V - 7 Ah**

100469	Powerpack housing
100450	Storage battery 6V - 7Ah
100460	Cover, powerpack, MINI-MANTRA complete
100730	Fuse T3.15 Amp





## **GUARANTEE**

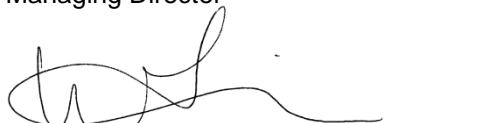
- I. If the purchase is a commercial transaction for both sides, the Customer must examine the goods immediately on receipt, as far as this is possible during the regular course of business and if there is a defect, inform the Vendor immediately.
- II. If the Customer does not make a complaint, the goods are considered approved, unless there is a defect, which was not visible during the examination. Furthermore §§ 377 ff. HGB applies.
- III. The Vendor may choose to eliminate the defects or deliver an item free of defects, (rectification of defects). If the rectification of defects fails, the Customer has the right to choose to either demand a reduction in price or to withdraw from the contract.
- IV. Further claims from the Customer, in particular due to consequential damage caused by a defect are in principle disqualified. This does not apply in cases of intent, gross negligence or breaches of contract by the Vendor as well as in cases of injury to life, body or health. The right of the Customer to withdraw from the contract remains unaffected.
- V. Warranty claims lapse after 24 months, respectively after 12 months in case of commercial use of the goods. The limitation period begins at delivery. The guarantee expires, if the delivered goods change or are handled incorrectly.
- VI. The Vendor is not responsible for material defects on deliveries, which he sources from third parties and forwards unchanged to the Customer. Responsibility in the case of intent or negligence remains unaffected. The preceding regulations do not imply a change to the burden of proof to the disadvantage of the Customer.
- VII. Claims for defects do not only exist in cases of negligible deviations from the agreed properties and conditions or only in negligible impairment of usefulness.
- VIII. Necessary expenses for the purpose of the rectifying defects are to be paid by the Customer, if they increase due to delivery to a different place than the place of business of the Customer, unless the transport corresponds to its intended use.

## **EG-Declaration of conformity Council Directive 2006/42/EG**

Mantis ULV-Sprühgeräte GmbH, Vierlander Straße 11 a, 21502 Geesthacht declare under our sole responsibility that the following products are in conformity with the provisions of the following Council Directive: 2006/42/EG

Typ MANKAR-ONE, MANKAR-TWO  
Typ MANTRA, MINI-MANTRA / PLUS, MICRO-MANTRA, MICRO-VASO, MANKAR HQ  
Typ FLEXOMANT-1W, FLEXOMANT-2W, FLEXOMANT-3W, FLEXOMANT-4W,  
FLEXOMANT-PLUS, VARIMANT-1, VARIMANT-2, VARIMANT-4 PLUS,  
VARIMANT-WINNER-TOP, VARIMANT-WINNER-UNO  
Typ MAFEX  
Typ ROFA

Hiske Weissmann  
Managing Director



(Name, title and signature)

Geesthacht January 2015

(Place and date of signature)