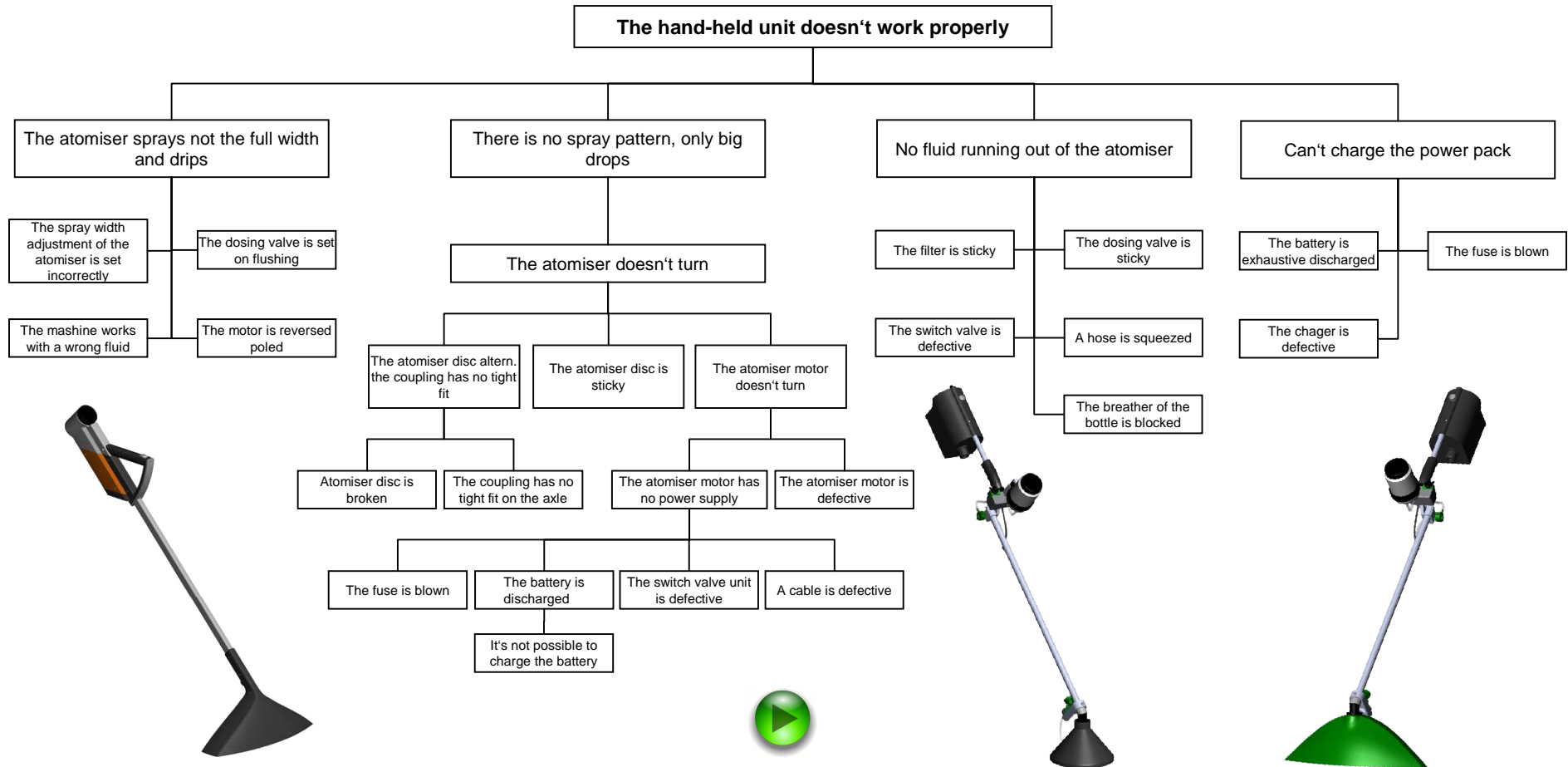


Fault analysis of MANKAR-CARRY

Fault tree analysis



next

Fault analysis of MANKAR-CARRY



The hand-held unit doesn't work properly



The atomiser sprays not the full width and dripps



next



There is no spray pattern, only big drops



next



No fluid is running out of the atomiser



next

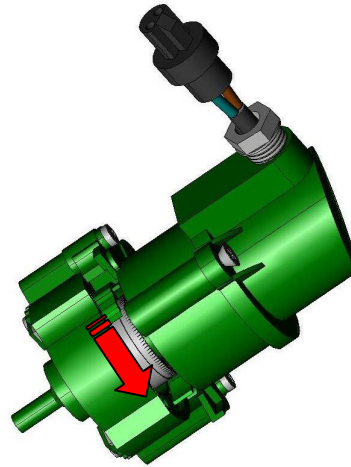


Can't charge the power pack



Fault analysis of MANKAR-CARRY

There is no spray pattern, only big drops



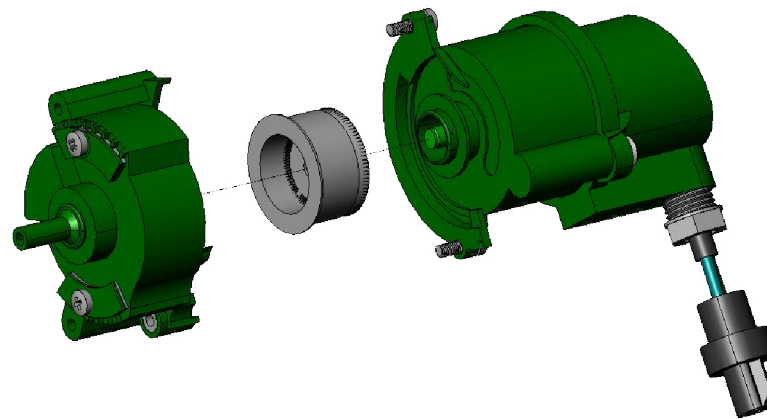
The atomiser disc
doesn't turn



next

Fault analysis of MANKAR-CARRY

The atomiser doesn't turn



The atomiser disc
altern. the coupling has
no tight fit



next

The atomiser disc is
sticky



next

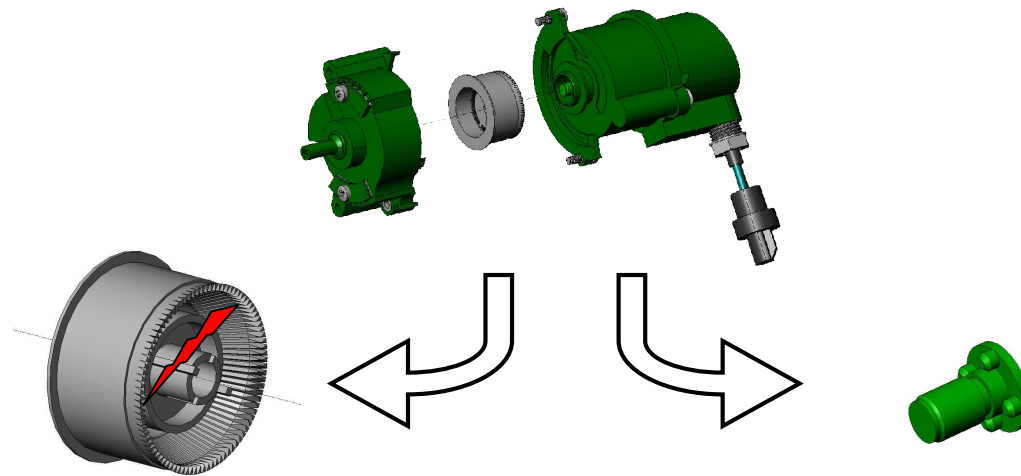
The atomiser motor
doesn't turn



next

Fault analysis of MANKAR-CARRY

The atomiser disc altern. the coupling has no tight fit



Atomiser disc is broken



next

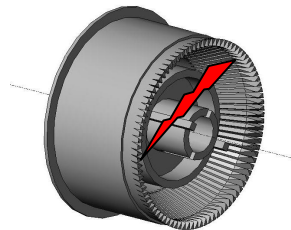
The coupling has no tight fit on the axle



next

Fault analysis of MANKAR-CARRY

Atomiser disc is broken



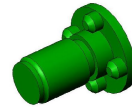
In this case the broken atomiser disc has to be replaced

Back to start



Fault analysis of MANKAR-CARRY

The coupling has no tight fit on the axle



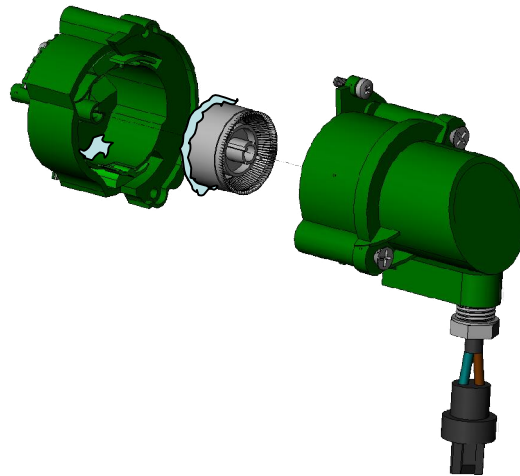
In this case the atomiser has to be send in for repair

Back to start



Fault analysis of MANKAR-CARRY

The atomiser disc is sticky



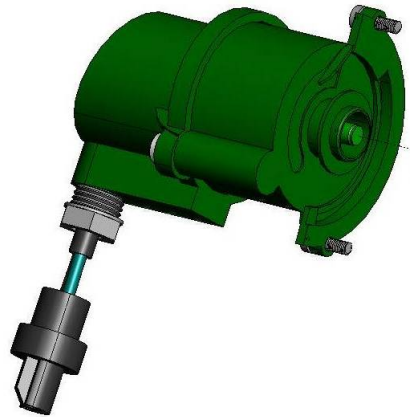
In this case the segment-module has to be removed and cleaned with warm water also the atomiser disc

Back to start



Fault analysis of MANKAR-CARRY

The atomiser motor doesn't turn



The atomiser motor has no power supply



next

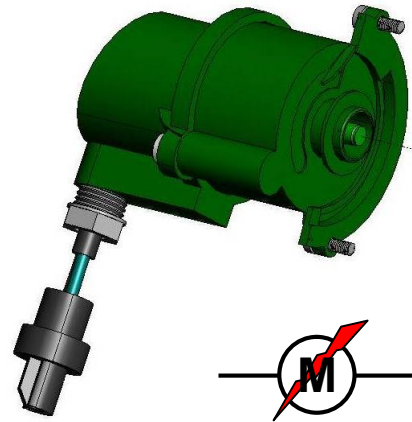
The atomiser motor is defective



next

Fault analysis of MANKAR-CARRY

The atomiser motor is defective



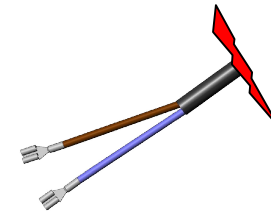
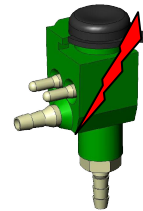
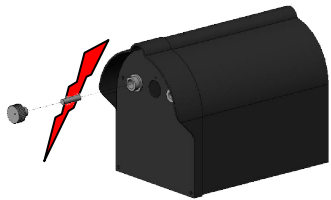
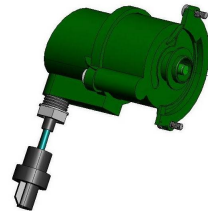
In this case the motor-module has to be replaced

Back to start



Fault analysis of MANKAR-CARRY

The atomiser motor has no power supply



The fuse is blown

The battery is discharged

The switch valve unit is defective

A cable is defective



next



next

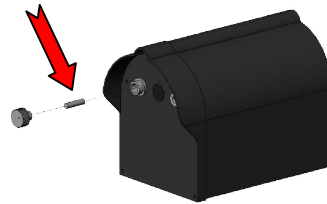


next



Fault analysis of MANKAR-CARRY

The fuse is blown



In this case the fuse has to be replaced

Back to start



Fault analysis of MANKAR-CARRY

The battery is discharged



In this case the power pack has to be charged with the provided automatic-charger. If it's not possible a cable or the battery is defective.



next

Fault analysis of MANKAR-CARRY

It's not possible to charge the battery



Information

The battery is full charged if the charger LED lights green. The charged battery has a voltage of 6V.

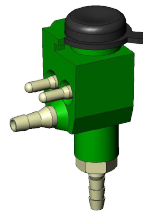
If it's not possible to charge the battery to the normal level is has to be replaced

Back to start



Fault analysis of MANKAR-CARRY

The switch valve unit is defective



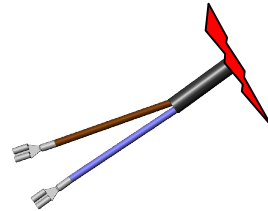
If it's not possible to switch current
the switch valve unit has to be replaced

Back to start



Fault analysis of MANKAR-CARRY

A cable is defective



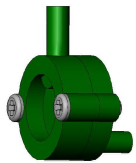
To find a broken wire all cables has to be checked for continuity.
Broken cables have to be replaced

Back to start



Fault analysis of MANKAR-CARRY

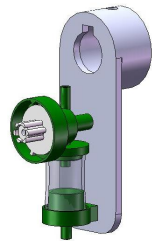
No fluid running out of the atomiser



The filter is sticky



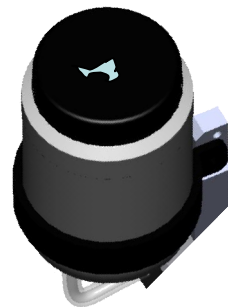
next



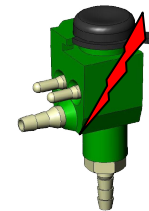
The dosing valve is sticky



next



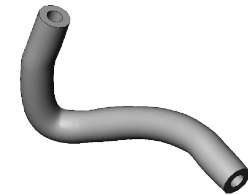
The breather of the bottle is blocked



The switch valve is defective



next



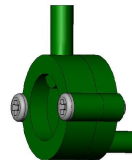
A hose is squeezed



next

Fault analysis of MANKAR-CARRY

The filter is sticky



This filter is used in
units before 2009

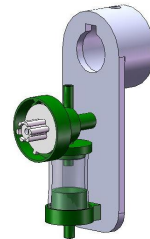
If there is back pressure in the filter it has to be cleaned with
warm water

Back to start



Fault analysis of MANKAR-CARRY

The dosing valve is sticky



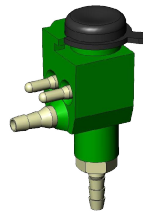
Remove the dial plate and loosen the screws beneath.
Clean all parts with warm water.

Back to start



Fault analysis of MANKAR-CARRY

The switch valve is defective



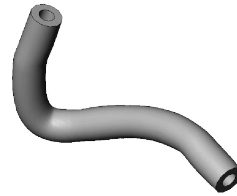
If it's not possible to switch the flow of liquid the switch-valve unit has to be replaced.

Back to start



Fault analysis of MANKAR-CARRY

A hose is squeezed



Please check if there is any hose which is squeezed.
It might cause backwater.

Back to start



Fault analysis of MANKAR-CARRY

The breather of the bottle is blocked



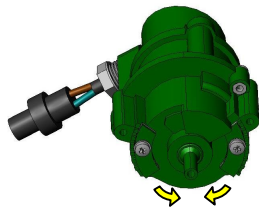
Clean bottle and lit with warm water. If you got a MINI MANTRA the breather hole can be in the lit or in the thread of the bottle. The MANKAR HQ also got a hole in the thread of the reservoir or a new developed lit with air vent

Back to start



Fault analysis of MANKAR-CARRY

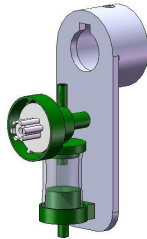
The atomiser sprays not the full width and dripps



The spray width adjustment of the atomiser is set incorrectly



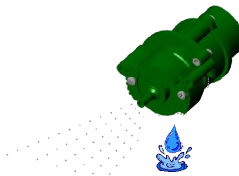
next



The dosing valve is set on flushing



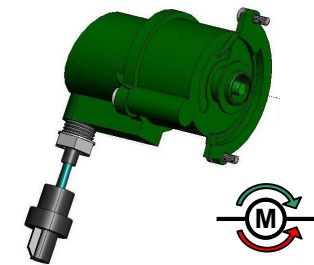
next



The machine works with a wrong fluid



next

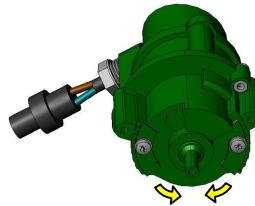


The motor is reversed poled



Fault analysis of MANKAR-CARRY

The spray adjustment of the atomiser is set incorrectly



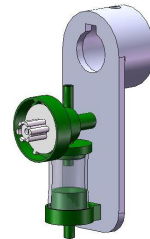
If the spray width adjustment of the atomiser is set to the minimum and the setting of the dosing valve is too high the atomiser starts dripping.

Back to start



Fault analysis of MANKAR-CARRY

The dosing valve is set on flushing



If the dosing valve has the flush setting it is not possible for the atomiser to spray evenly because of an overflow .

Back to start



Fault analysis of MANKAR-CARRY

The machine works with a wrong fluid



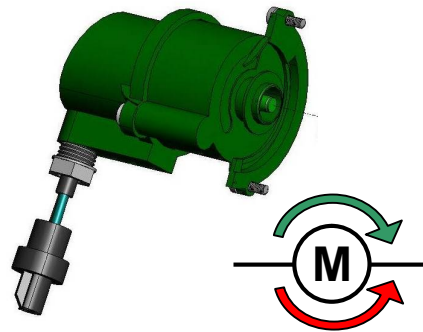
If a fluid with a very low viscosity is used the function is limited and the atomiser starts dripping.

Back to start



Fault analysis of MANKAR-CARRY

The motor is reversed poled



If the atomiser disc turns counter-clockwise it starts dripping.
The polarity of the power supply has to be checked.

Back to start



Fault analysis of MANKAR-CARRY

Can't charge the power pack



The battery is
exhaustive discharged



next

The fuse is blown



next

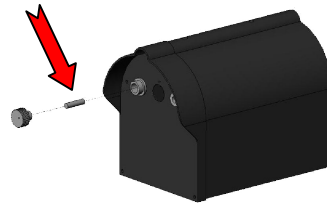
The charger is defective



next

Fault analysis of MANKAR-CARRY

The fuse is blown



In this case the fuse has to be replaced

Back to start



Fault analysis of MANKAR-CARRY

The battery is exhaustive discharged

Information

If the voltage of the battery is below 4,5V the charger doesn't detect the battery automatically and can't charge it.



Information

The battery is full charged if the charger LED lights green. The charged battery has a voltage of 6V.

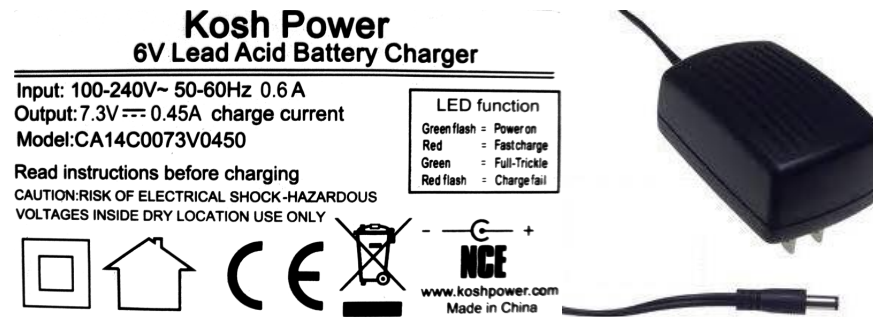
If it's not possible to charge the battery to the normal level is has to be replaced

Back to start



Fault analysis of MANKAR-CARRY

The charger is defective



In this case the charger has to be replaced

Back to start

